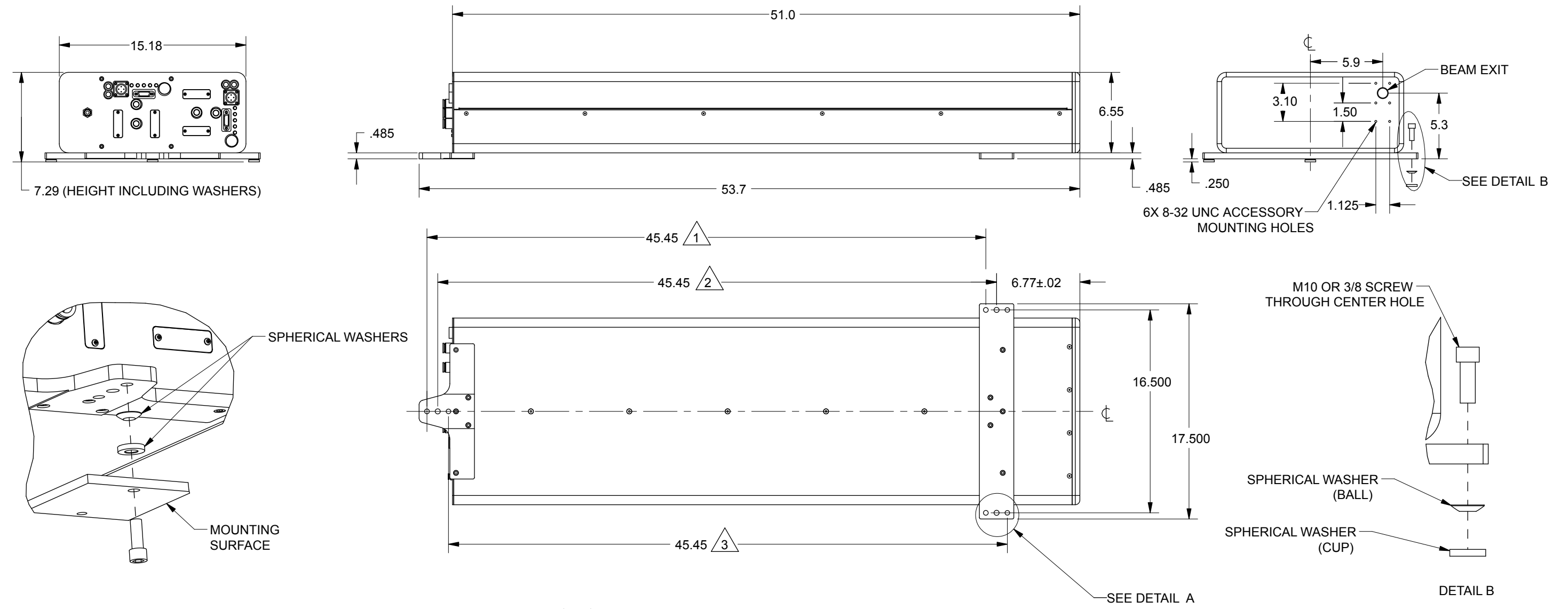


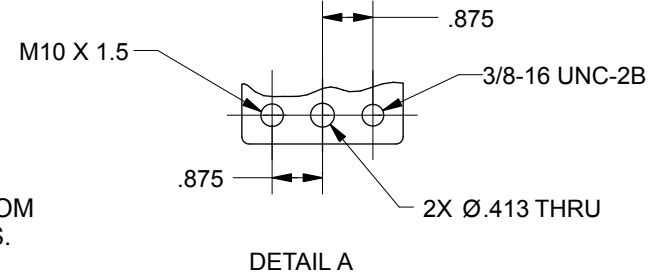
REV	ECO	DATE	DESCRIPTION	DB
C	3008	16-May-06	UPDATED WATER FITTINGS	



BOTTOM ACCESS MOUNTING

TOP ACCESS MOUNTING

- NOTES:
- 1 THIS MOUNTING HOLE PATTERN IS USED WHEN BOTTOM ACCESS MOUNTING IS DESIRED WITH M10 FASTENERS.
 - 2 THIS MOUNTING HOLE PATTERN IS USED WHEN TOP ACCESS MOUNTING IS DESIRED, STANDARD OR METRIC FASTENERS.
 - 3 THIS MOUNTING HOLE PATTERN IS USED WHEN BOTTOM ACCESS MOUNTING IS DESIRED WITH 3/8 FASTENERS.



DETAIL A

TOLERANCES UNLESS NOTED:		PROPRIETARY THIS DRAWING IS PROPRIETARY TO SYNRAD INC. AND SHALL NOT BE USED OR DISCLOSED IN WHOLE OR IN PART WITHOUT WRITTEN PERMISSION OF SYNRAD INC.	SYNRAD INC.	
.x = ± 0.1	ANGLE = ± 0.5°		4600 Campus Place	
.xx = ± 0.01			Mukilteo, WA 98275	
.xxx = ± 0.005			Phone: (425)349-3500	
MATERIAL:		Fax: (425)349-3667		
FINISH:		SYNRAD DESCRIPTION: F400 OUTLINE & MOUNTING		
		PART NUMBER: 300-19106-01	DWG/FILE NUMBER: 300-19106-01	
		SHEET 1 OF 1	DB: pdmdb	DRAWN BY:
		UNITS: INCHES	CATEGORY: I	CHECKED BY:
		SIZE: B	FINISH CLASS: A	APPROVED BY:
				DATE: 12-Mar-04
				DATE:
				DATE:

Pro/E