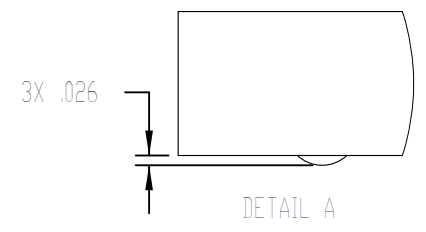
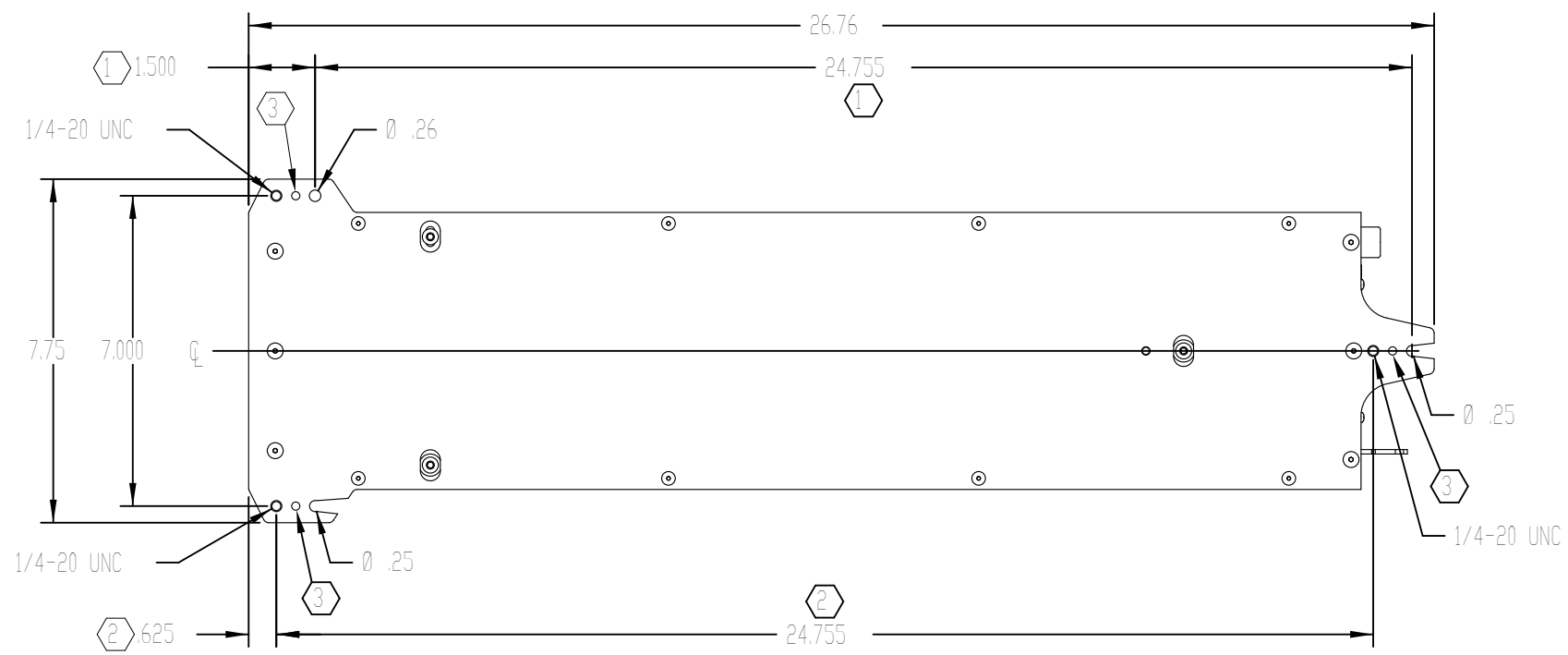
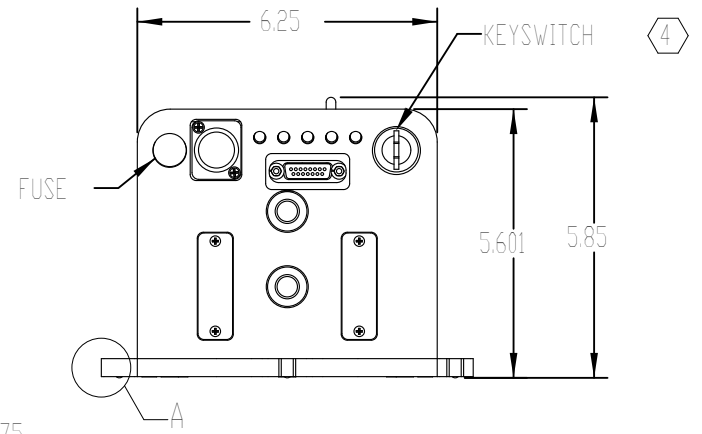
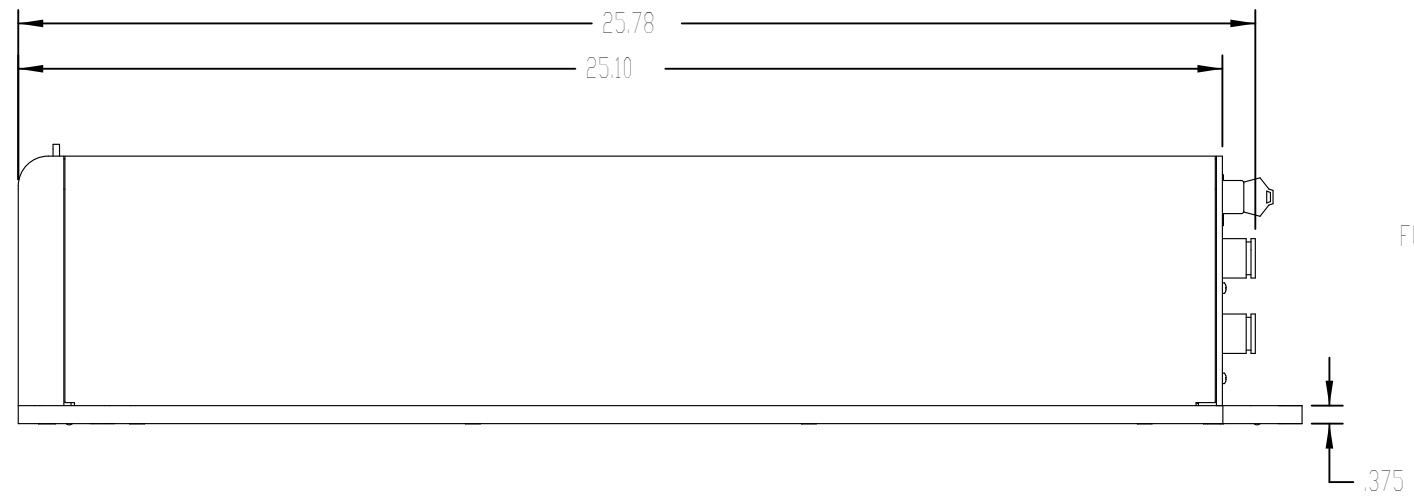
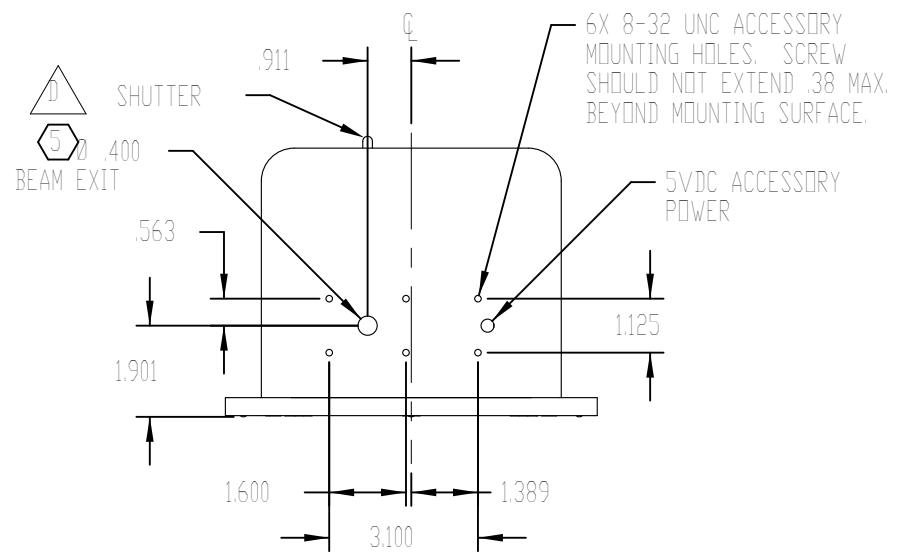


REV	ECD	DATE	DESCRIPTION	DB
C	3912	14-Aug-08	ADD BEAM EXITØ, CONVERT TO SOLIDWORKS	DMD
D	4107	9-Sep-09	ADD NOTE 5	DMD



PART NUMBER	MODEL
FSF100K	KEY
FSF100S	DEM

- NOTES:
- ① THIS MOUNTING HOLE PATTERN USED WHEN TOP ACCESS FASTENING DESIRED.
  - ② THIS MOUNTING PATTERN USED WHEN BOTTOM ACCESS FASTENING DESIRED.
  - ③ HARDENED BALL MOUNTING POINT, 3X. BALL Ø.1875.
  - ④ KEYSWITCH VERSION ONLY.
  - ⑤ BEAM PATH MAY NOT BE CENTERED OR PERPENDICULAR TO FACEPLATE APERTURE.

TOLERANCES UNLESS NOTED:	
.x = ± 0.1	ANGLE = ± 2.0 °
.xx = ± 0.01	
.xxx = ± 0.005	
MATERIAL:	
FINISH:	

PROPRIETARY THIS DRAWING IS PROPRIETARY TO SYNRAD INC. AND SHALL NOT BE USED OR DISCLOSED IN WHOLE OR IN PART WITHOUT WRITTEN PERMISSION OF SYNRAD INC.

**SYNRAD** SYNRAD INC.  
4600 Campus Place  
Mukilteo, WA 98275  
Phone: (425)349-3500  
Fax: (425)349-3667

DESCRIPTION: **OUTLINE & MOUNTING, F100**

PART NUMBER: SEE TABLE	DWG/FILE NUMBER: 300-18591-01
SHEET 1 of 1	ENG: E. Stockinger
UNITS: Inches	CHECKED BY: DATE:
SIZE: B	APPROVED BY: DATE: