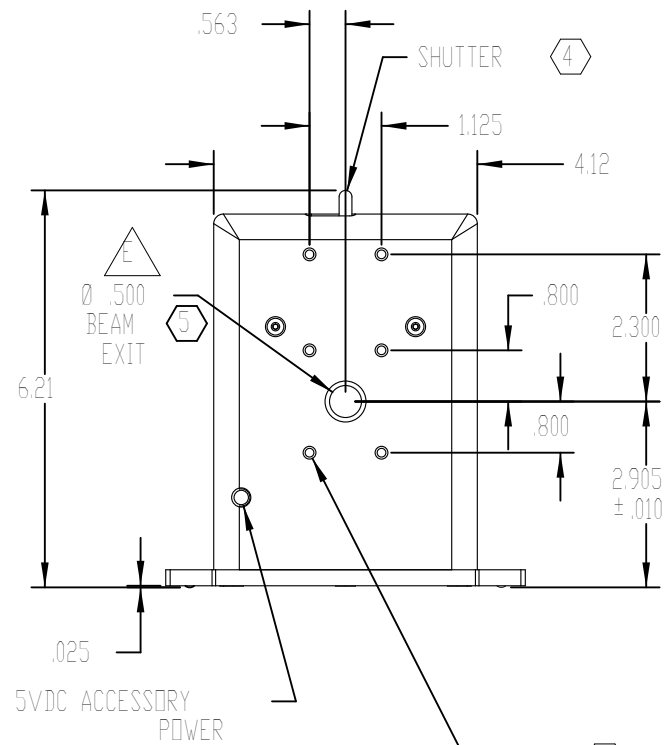
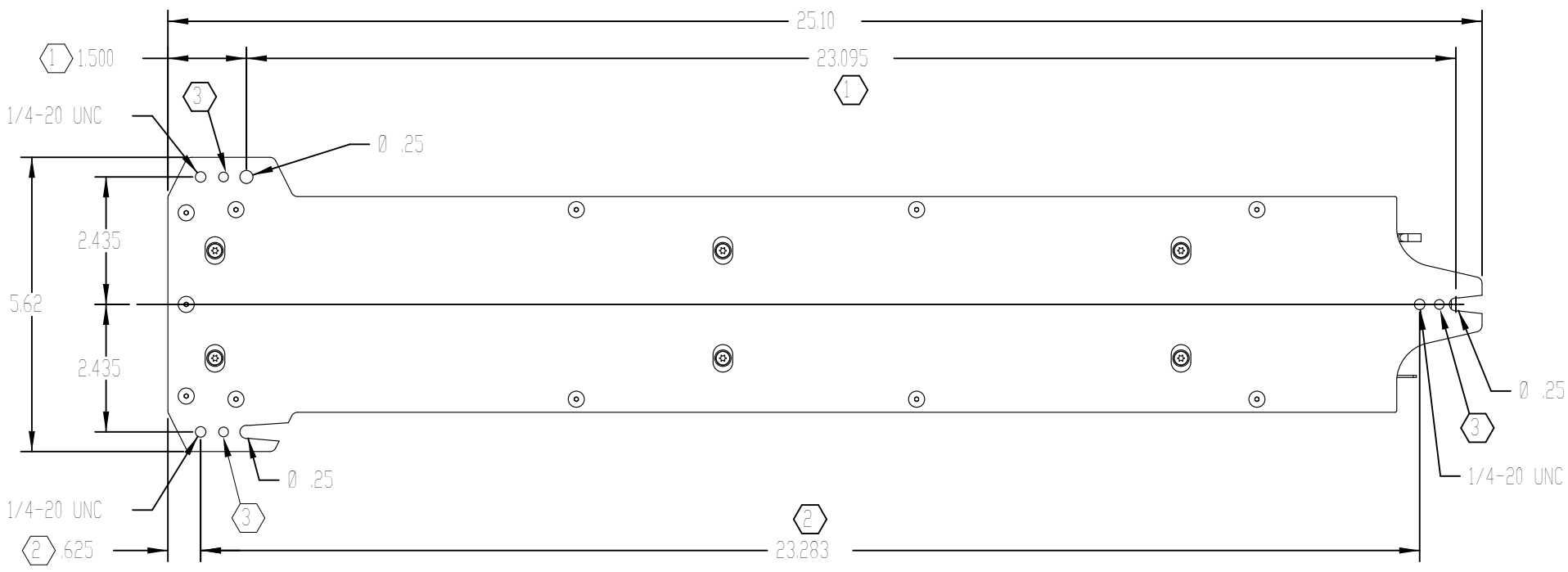
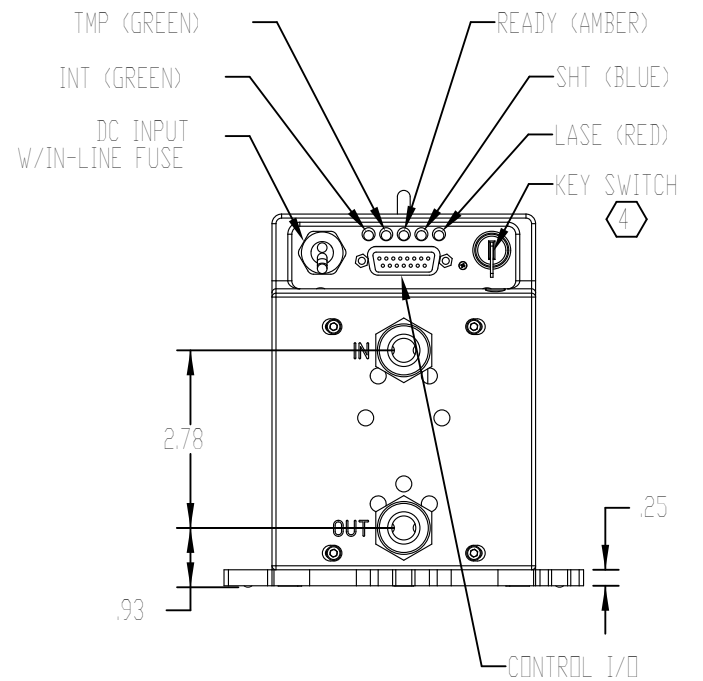
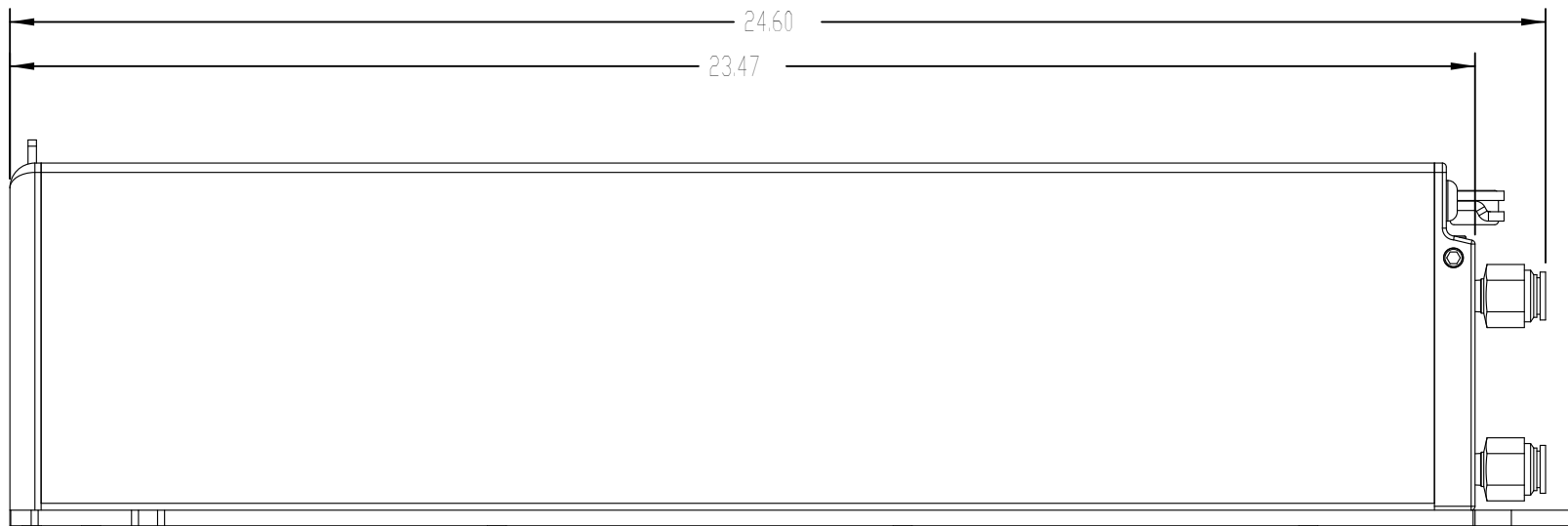


REV	ECO	DATE	DESCRIPTION	DB
D	3912	11-Aug-08	ADD BEAM EXITØ, CONVERT TO SOLIDWORKS	DMD
E	4107	9-Sep-09	ADD NOTE 5	DMD



5VDC ACCESSORY POWER  
 6X 8-32 UNC ACCESSORY MOUNTING HOLES. SCREWS SHOULD NOT EXTEND MORE THAN .19 INTO FACE PLATE



PART NUMBER	MODEL
FSV40KW	KEY
FSV40SW	DEM

- NOTES:
- ① THIS MOUNTING HOLE PATTERN USED WHEN TOP ACCESS FASTENING DESIRED.
  - ② THIS MOUNTING PATTERN USED WHEN BOTTOM ACCESS FASTENING DESIRED.
  - ③ HARDENED BALL MOUNTING POINT, 3X. (Ø.1875 BALL BEARING)
  - ④ KEYSWITCH VERSION ONLY.
  - ⑤ BEAM PATH MAY NOT BE CENTERED OR PERPENDICULAR TO FACEPLATE APERTURE.

TOLERANCES UNLESS NOTED:	
.x = ± 0.1	ANGLE = ± 0.5 °
.xx = ± 0.01	
.xxx = ± 0.005	
MATERIAL:	
FINISH:	

PROPRIETARY  
 THIS DRAWING IS PROPRIETARY TO SYNRAD INC. AND SHALL NOT BE USED OR DISCLOSED IN WHOLE OR IN PART WITHOUT WRITTEN PERMISSION OF SYNRAD INC.

DESCRIPTION:  
 OUTLINE & MOUNTING, WATER-COOLED, V40

PART NUMBER: SEE TABLE  
 SHEET 1 of 1  
 UNITS: Inches  
 SIZE: B

**SYNRAD** INC.  
 4600 Campus Place  
 Mukilteo, WA 98275  
 Phone: (425)349-3500  
 Fax: (425)349-3667

DWG/FILE NUMBER: 300-18565-03  
 DRAWN BY: K. JOHNSON  
 DATE: 12-Sep-01

CHECKED BY: DATE:  
 APPROVED BY: DATE: